

TEXAS A&M UNIVERSITY
SAN ANTONIO

FACT BOOK
2014



TEXAS A&M UNIVERSITY
SAN ANTONIO

FACT BOOK
FALL 2014

Office of Institutional Research
Office of the Provost
One University Way
San Antonio, TX 78224

TABLE OF CONTENTS

GENERAL INFORMATION	3
History	4
Mission	4
University Accreditation	4
University Profile Fall 2014	5
Texas A&M University System Board of Regents 2014 - 2015	6
A&M-SA Executive Team 2014 - 2015	7
Faculty Senate 2014 - 2015	7
Staff Council 2014 - 2015	7
Organizational Chart	8
Degree Programs 2014 - 2015	9
STUDENT INFORMATION	11
Admissions	12
Admission Data by Level Fall 2010 - 2014	12
Fall 2014 Admission by College and Level.....	13
Enrollment	14
Enrollment by Level Fall 2009 - 2014.....	14
Enrollment by Coordinating Board Classification Fall 2009 - 2014.....	14
Annual Enrollment by Level.....	15
Annual Unduplicated Enrollment.....	15
FTE Enrollment Fall 2009 - 2014	16
Detailed Composition of Student Body Fall 2010 - 2014	17
Detailed Composition of Undergraduate Student Body Fall 2010 - 2014	18
Detailed Composition of Graduate Student Body Fall 2010 - 2014.....	19
Enrollment by Major Fall 2009 - 2014	20
Enrollment by Texas Residential County Fall 2010 - 2014.....	24
Enrollment by Age Fall 2010 - 2014.....	25
Enrollment by Age and Level, Fall 2014	25
Credit Hours	26
Semester Credit Hours, Fall 2009 - 2014.....	26
Semester Credit Hours by College & Level Fall 2009 - 2014.....	27
Semester Credit Hours by College, Department, Instruction Area & Level, Fall 2014	28
Semester Credit Hours by College, Department, Major, & Level, Fall 2014	30
Student/Faculty Ratio, Fall 2011 - 2014.....	31
Class & Semester Credit Hour Load Fall 2010 - 2014	32
Annual SCH by Level, 2009 - 2014	33
SCH Generated by Instruction Mode, Fall 2010 - 2014.....	34
SCH Generated by College, Department, Instruction Mode, & Level, Fall 2014	35

Degrees Awarded	36
Annual Degrees Conferred by Level.....	36
Degrees Conferred by Level & Ethnicity	36
Degrees Conferred by Level & Race	37
Annual Degrees Conferred by College & Level.....	38
Degrees Conferred by College, Department, Major, & Level.....	39
 FACULTY AND STAFF	 43
Faculty	44
A&M-SA Faculty Fall 2011 - 2014.....	44
Faculty FTE (Full-Time Equivalent) Fall 2011 - 2014.....	44
Faculty Headcount Fall 2011 - 2014.....	45
Faculty Headcount by Rank Fall 2011 - 2014.....	46
Detailed Composition of Faculty Fall 2011 - 2014	47
Detailed Composition of Full-Time Faculty Fall 2014.....	48
Detailed Composition of Part-Time Faculty Fall 2014.....	49
Staff	50
Detailed Composition of Staff Fall 2011 - 2014	50

GENERAL INFORMATION

HISTORY

Established as the Texas A&M University-Kingsville System Center-San Antonio in January 2000, A&M-SA was created as a stand-alone university on May 23, 2009. A&M-SA meets the criteria for a Four-Year 5 SREB institution and offers 37 programs leading to baccalaureate and master's degrees. For more information, please visit www.tamusa.tamus.edu.

MISSION

Texas A&M University-San Antonio faculty and staff prepare and empower students through innovative and challenging academic and co-curricular programs that contribute to and enrich the economic and social development of the community and region. A solid foundation for success is established through dynamic teaching, scholarship, research, and public service that inspire graduates to lifelong learning and responsible global citizenship.

UNIVERSITY ACCREDITATION

Texas A&M University-San Antonio is accredited by the Southern Association of Colleges and Schools Commission on Colleges to award baccalaureate and master's degrees. Contact the Commission on Colleges at 1866 Southern Lane, Decatur, Georgia 30033-4097 or call (404) 679-4500 for questions about the accreditation of Texas A&M University-San Antonio.

UNIVERSITY PROFILE FALL 2014

Established	2009
President	Dr. Maria Hernandez Ferrier
Enrollment	4,521 (FTE* 3462.8)
Faculty	202 (151.375 FTE)
Staff	199
Colleges	College of Arts & Sciences College of Business College of Education & Human Development
Degree Programs	37
Annual Degrees Awarded	1,152
Budget	\$47,663,889
Endowment	\$464,074
Annual Tuition & Fees	\$6,094.82**

*FTE student: 12 SCH per undergraduate, 9 SCH per graduate

**Based on two semesters for a new full-time (12 SCH per semester) in-state undergraduate student

TEXAS A&M UNIVERSITY SYSTEM BOARD OF REGENTS 2014 - 2015

Officers FY2015

- Phil Adams, Chairman, Board of Regents
- Cliff Thomas, Vice Chairman, Board of Regents

Member(s) with term set to expire on February 1, 2015

- Phil Adams
- Jim Schwertner
- John D. White

Member(s) with term set to expire on February 1, 2017

- Elaine Mendoza
- Judy Morgan
- Cliff Thomas

Member(s) with term set to expire February 1, 2019

- Anthony G. Buzbee
- Morris E. Foster
- Charles W. Schwartz

Member(s) with term set to expire May 31, 2015

- Colton L. Buckley

Office of the Board of Regents
Texas A&M University
P.O. Box 15812
College Station, TX 77841-5013

(979) 845-9600

Vickie Spillers, Executive Director
vickie@tamus.edu

Jackie Bell
Assistant to the Board of Regents
jbelle@tamus.edu

A&M-SA EXECUTIVE TEAM 2014 - 2015

Maria Hernandez Ferrier	President
Brent Marriott Snow	Provost and Vice President for Academic Affairs
Charles Rodriguez	Chief of Staff and Vice President for Strategic Initiatives and Military Community Development
Rick Trefzer	Chief Information Office and Acting Vice President for Finance and Administration/CFO
Melissa Mahan	Vice President of Student Affairs
Marilu Reyna	Associate Vice President for University Communications and Special Projects
Mario Vazquez	Associate Vice President for Institutional Advancement

FACULTY SENATE 2014 - 2015

President:	Edward B. Westerman, Associate Professor of History
Vice President/President Elect:	Lorrie Webb, Associate Professor of Curriculum and Instruction
Secretary:	Melissa Jozwiak, Assistant Professor of Early Childhood Education
Parliamentarian:	Joseph M. Simpson, Assistant Professor of Sociology

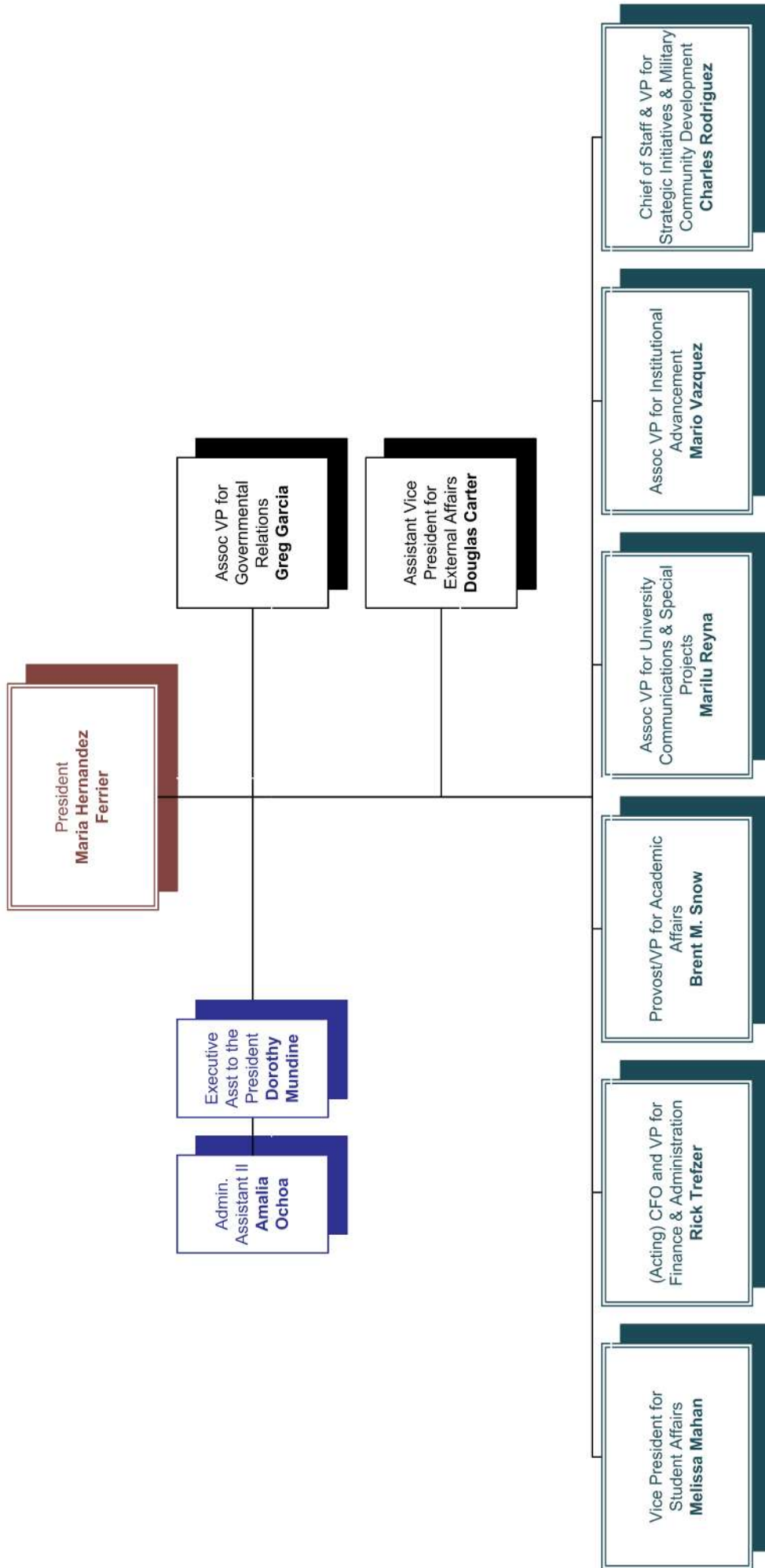
STAFF COUNCIL 2014 - 2015

President:	Jesse Samudio, Associate Director of Veterans Affairs
President-Elect:	Sylvia Medel, Director of Student Rights & Responsibilities & International Affairs
Treasurer:	Eugene Ramirez, Acting Associate Director of Financial Aid
Secretary:	Vaishali Bhatt, Helpdesk Coordinator
Parliamentarian:	Laura Sanchez, Purchasing Coordinator
Members:	Susan Gonzales, Patrol Officer
	Juan Moreno, Business Services Account Specialist
	Norma Ramirez, Recruiter



TEXAS A&M UNIVERSITY
SAN ANTONIO

Texas A&M University-San Antonio
Office of the President
October 30, 2014



Legend

- Maroon = University President
- Black = Associate/Assistant Vice Presidents & Special Assts
- Green = Executive Team (ET) Vice Presidents and Associate VP
- Blue = Staff

DEGREE PROGRAMS 2014 - 2015¹

Program	CIP Code	Degree Levels	
		Baccalaureate	Master's
COLLEGE OF ARTS & SCIENCES			
<i>DEPARTMENT OF HUMANITIES & SOCIAL SCIENCES</i>			
COMMUNICATIONS	09.0100.00	BA (120 SCH) Start date: 07/30/2009	
SPANISH	16.0905.00	BA (120 SCH) Start date: 04/18/2012	
ENGLISH	23.0101.00	BA (120 SCH) Start date: 07/30/2009	MA MS Start date: 07/30/2009
APPLIED ARTS AND SCIENCES	30.9999.40	BAAS (120 SCH) Start date: 07/30/2009	
CRIMINOLOGY	45.0401.00	BS (120 SCH) Start date: 07/30/2009	
POLITICAL SCIENCE	45.1001.00	BA (120 SCH) Start date: 07/30/2009	
SOCIOLOGY	45.1101.00	BA (120 SCH) Start date: 07/30/2009	
HISTORY	54.0101.00	BA (120 SCH) Start date: 07/30/2009	
<i>DEPARTMENT OF SCIENCE & MATHEMATICS</i>			
BIOLOGY	26.0101.00	BA (120 SCH) BS (120 SCH) Start date: 07/30/2009	
MATHEMATICS	27.0101.00	BA (120 SCH) BS (120 SCH) Start date: 07/30/2009	
PSYCHOLOGY	42.0101.00	BA (120 SCH) Start date: 07/30/2009	
COLLEGE OF BUSINESS			
<i>DEPARTMENT OF ACCOUNTING, COMPUTING, & FINANCE</i>			
COMPUTER SCIENCE	11.0701.00	BS (120 SCH) Start date: 09/06/2011	
ACCOUNTING	52.0301.00	BBA (120 SCH) Start date: 07/30/2009	MPA (36 SCH) Start date: 01/17/2011
FINANCE	52.0801.00	BBA (120 SCH) Start date: 07/30/2009	
COMPUTER INFORMATION SYSTEMS	52.1201.00	BBA (120 SCH) Start date: 07/30/2009	

1 Source: The Texas Higher Education Coordinating Board University Program Inventory (<http://www.theccb.state.tx.us/apps/programinventory/>); accessed on 10/29/2014.

Program	CIP Code	Degree Levels	
		Baccalaureate	Master's
<i>DEPARTMENT OF MANAGEMENT & MARKETING</i>			
GENERAL BUSINESS ADMINISTRATION	52.0101.00	BBA (120 SCH) Start date: 07/30/2009	
BUSINESS ADMINISTRATION	52.0201.00		MBA Start date: 07/30/2009
MANAGEMENT	52.0201.00	BBA (120 SCH) Start date: 07/30/2009	
INTERNATIONAL BUSINESS MANAGMENT	52.1101.00	BBA (120 SCH) Start date: 07/30/2009	
MARKETING	52.1401.00	BBA (120 SCH) Start date: 07/30/2009	
COLLEGE OF EDUCATION & HUMAN DEVELOPMENT			
<i>DEPARTMENT OF COUNSELING, HEALTH & KINESIOLOGY</i>			
COUNSELING AND GUIDANCE	13.1101.00		MA MS Start date: 07/30/2009
KINESIOLOGY	31.0505.00	BS (120 SCH) Start date: 07/30/2009	MS Start date: 07/30/2009
<i>DEPARTMENT OF EDUCATOR & LEADERSHIP PREPARATION</i>			
BILINGUAL EDUCATION	13.0201.00		MA MS Start date: 07/30/2009
EDUCATIONAL ADMINISTRATION	13.0401.00		MA MS Start date: 07/30/2009
SPECIAL EDUCATION	13.1001.00		MED Start date: 07/30/2009
EARLY CHILDHOOD	13.1210.00		MED Start date: 07/30/2009
READING SPECIALIZATION	13.1315.00		MS Start date: 07/30/2009
INTERDISCIPLINARY STUDIES	30.9999.01	BS (120 SCH) Start date: 07/30/2009	

STUDENT INFORMATION

ADMISSIONS

Admission Data by Level Fall 2010 - 2014¹

	2010		2011		2012		2013		2014	
	Count	Percent Conversion	Count	Percent Conversion	Count	Percent Conversion	Count	Percent Conversion	Count	Percent Conversion
Undergraduate										
Applications	1,819		1,255		1,508		1,630		1,545	
Accepted	1,650	91%	1,131	90%	1,312	87%	1,438	88%	1,281	83%
Enrolled	1,216	74%	771	68%	886	68%	1,005	70%	923	72%
Post-Baccalaureate										
Applications	58		27		34		14		2	
Accepted	47	81%	22	81%	33	97%	13	93%	1	50%
Enrolled	30	64%	15	68%	24	73%	9	69%	1	100%
Graduate										
Applications	606		413		499		421		356	
Accepted	527	87%	377	91%	441	88%	351	83%	301	85%
Enrolled	374	71%	286	76%	334	76%	237	68%	293	97%
Total										
Applications	2,483		1,695		2,041		2,065		1,903	
Accepted	2,224	90%	1,530	90%	1,786	88%	1,802	87%	1,583	83%
Enrolled	1,620	73%	1,072	70%	1,244	70%	1,251	69%	1,217	77%

¹ Source: CBM001 and CBM00B

Fall 2014 Admission by College and Level²

	Applied	Accepted	Enrolled
Arts & Sciences			
Humanities & Social Sciences			
Undergraduate	558	461	338
Graduate	9	9	4
Science & Mathematics			
Undergraduate	257	227	138
Graduate			
Business			
Accounting, Computing, & Finance			
Undergraduate	228	180	113
Graduate	27	22	19
Management & Marketing			
Undergraduate	214	171	149
Graduate	131	115	160
Education & Human Development			
Counseling, Health, & Kinesiology			
Undergraduate	114	90	54
Graduate	102	80	60
Educator & Leadership Preparation			
Undergraduate	169	148	131
Post-Baccalaureate	2	1	1
Graduate	87	75	50
Unknown			
Undergraduate	5	4	0
Graduate	0	0	0

² Source: CBM001, CBM00B, and FactbookApplicants.SQL.

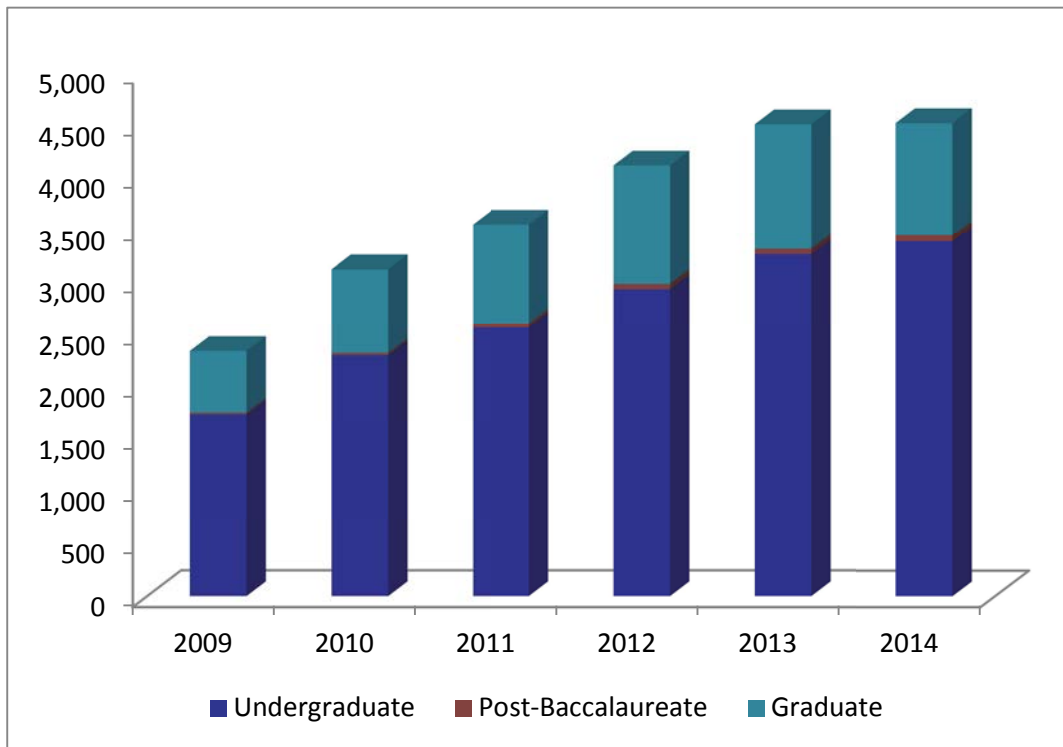
ENROLLMENT

Enrollment by Level Fall 2009 - 2014³

	2009		2010		2011		2012		2013		2014	
	#	%	#	%	#	%	#	%	#	%	#	%
Undergraduate	1,757	74.99%	2,324	74.49%	2,604	73.27%	2,983	72.47%	3,316	73.49%	3,444	76.18%
Graduate	586	25.01%	796	25.51%	950	26.73%	1,133	27.53%	1,196	26.51%	1,077	23.82%
Total	2,343		3,120		3,554		4,116		4,512		4,521	

Enrollment by Coordinating Board Classification Fall 2009 - 2014

	2009		2010		2011		2012		2013		2014	
	#	%	#	%	#	%	#	%	#	%	#	%
Undergraduate	1,740	74.26%	2,301	73.75%	2,569	72.28%	2,931	71.21%	3,264	72.34%	3,386	74.89%
Post-Baccalaureate	17	0.73%	23	0.74%	35	0.98%	52	1.26%	52	1.15%	58	1.28%
Graduate	586	25.01%	796	25.51%	950	26.73%	1,133	27.53%	1,196	26.51%	1,077	23.82%
Total	2,343		3,120		3,554		4,116		4,512		4,521	



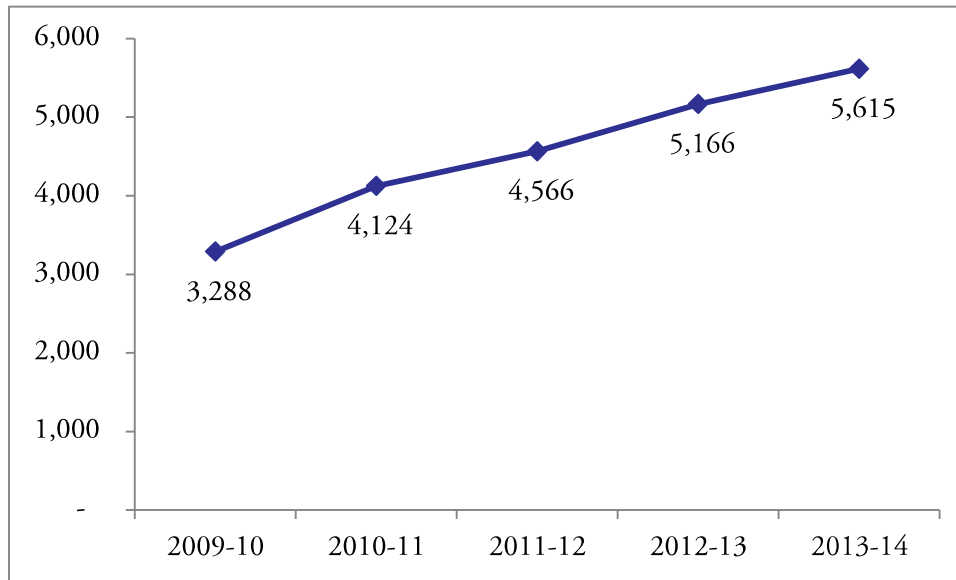
**A&M-SA's enrollment
has grown by 93%
since 2009.**

³ Source: CBM001. Each student is counted once regardless of number of enrolled courses.

Annual Enrollment by Level⁴

	2009-2010	2010-2011	2011-2012	2012-2013	2013-2014
Fall					
Undergraduate	1,740	2,301	2,569	2,931	3,264
Post-Baccalaureate	17	23	35	52	52
Graduate	586	796	950	1,133	1,196
Total	2,343	3,120	3,554	4,116	4,512
Spring					
Undergraduate	1,865	2,348	2,573	2,778	3,155
Post-Baccalaureate	25	27	39	48	53
Graduate	678	866	988	1,100	1,100
Total	2,568	3,241	3,600	3,926	4,308
Summer					
Undergraduate	978	1,033	1,028	1,249	1,332
Post-Baccalaureate	13	15	17	16	19
Graduate	440	477	565	636	575
Total	1,431	1,525	1,610	1,901	1,926

Annual Unduplicated Enrollment⁵

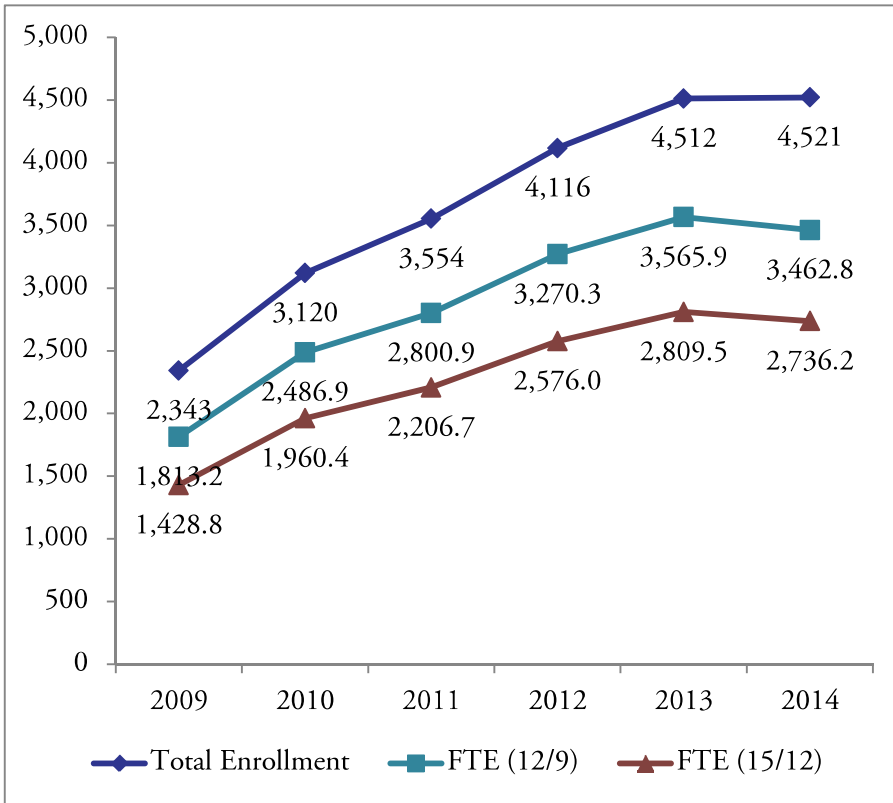


⁴ Source: CBM001

⁵ Students who enrolled in more than one semester of the academic year are counted only once in this total.

FTE Enrollment Fall 2009 - 2014

	2009	2010	2011	2012	2013	2014
Total Enrollment	2,343	3,120	3,554	4,116	4,512	4,521
FTE (12/9)	1,813.2	2,486.9	2,800.9	3,270.3	3,565.9	3,462.8
FTE (15/12)	1,428.8	1,960.4	2,206.7	2,576.0	2,809.5	2,736.2



The College of Arts & Sciences added departments in 2013. In 2014, the College of Business added departments, and the College of Education & Kinesiology reorganized into the College of Education & Human Development

Two-thirds of A&M-SA's students classify themselves as Hispanic or Latino.

FTE (12/9) is based on 12 SCH per undergraduate student and 9 SCH per graduate student.

FTE (15/12) is based on 15 SCH per undergraduate student and 12 SCH per graduate student.

Detailed Composition of Student Body Fall 2010 - 2014⁶

	2010		2011		2012		2013		2014	
	#	%	#	%	#	%	#	%	#	%
Attendance Status										
Full-Time	1,284	41.15%	1,444	40.63%	1,634	39.70%	1,703	37.74%	1,720	38.04%
Part-Time	1,836	58.85%	2,110	59.37%	2,482	60.30%	2,809	62.26%	2,801	61.96%
Enrollment by College										
Arts & Sciences	889	28.49%	1,064	29.94%	1,316	31.97%				
Humanities & Social Sciences							1,077	23.87%	1,180	26.10%
Science & Mathematics							428	9.49%	415	9.18%
Business	867	27.79%	978	27.52%	1,198	29.11%	1,310	29.03%		
Accounting, Computing, & Finance									533	11.79%
Management & Marketing									840	18.58%
Education & Human Development										
Curriculum & Kinesiology	1020	32.69%	1120	31.51%	1,124	27.31%	1,159	25.69%		
Leadership & Counseling	328	10.51%	376	10.58%	459	11.15%	514	11.39%		
Counseling, Health, & Kinesiology									482	10.66%
Educator & Leadership Preparation									1,047	23.16%
Unknown	16	0.51%	16	0.45%	19	0.46%	24	0.53%	24	0.53%
Gender										
Male	1,019	32.66%	1,139	32.05%	1,342	32.60%	1,542	34.18%	1,614	35.70%
Female	2,101	67.34%	2,415	67.95%	2,774	67.40%	2,970	65.82%	2,907	64.30%
Race										
American Indian or Alaskan Native	9	0.29%	4	0.11%	69	1.68%	90	1.99%	108	2.39%
Asian	7	0.22%	20	0.56%	48	1.17%	69	1.53%	65	1.44%
Black or African-American	183	5.87%	206	5.80%	270	6.56%	283	6.27%	294	6.50%
International	7	0.22%	10	0.28%	19	0.46%	30	0.66%	42	0.93%
Multiracial	12	0.38%	31	0.87%	102	2.48%	120	2.66%	163	3.61%
Native Hawaiian or Other Pacific Islander	1	0.03%	2	0.06%	4	0.10%	7	0.16%	5	0.11%
Unknown or Not Reported	182	5.83%	180	5.06%	1,021	24.81%	963	21.34%	893	19.75%
White	693	22.21%	803	22.59%	2,583	62.76%	2,950	65.38%	2,951	65.27%
Ethnicity										
Hispanic or Latino	2,026	64.94%	2,298	64.66%	2,797	67.95%	3,052	67.64%	3,026	66.93%
Not Hispanic or Latino	912	29.23%	1,076	30.28%	1,233	29.96%	1,378	30.54%	1,425	31.52%
Unreported	182	5.83%	180	5.06%	86	2.09%	82	1.82%	70	1.55%
Total Enrollment	3,120		3,554		4,116		4,512		4,521	

56% of enrolled students report that they are the first generation in their families to attend college.

13% of enrolled students report that they or a family member have or are currently serving in a branch of the military.

⁶ Source: CBM001. As of fall 2012, the Texas Higher Education Coordinating Board had disaggregated the reporting of race and ethnicity. Because of this shift in reporting, the total for all races prior to fall 2012 will be less than the total enrollment for those years.

Detailed Composition of Undergraduate Student Body Fall 2010 - 2014

	2010		2011		2012		2013		2014	
	#	%	#	%	#	%	#	%	#	%
Attendance Status										
Full-Time	1,075	46.26%	1,199	46.04%	1,435	48.11%	1,513	45.63%	1,444	41.93%
Part-Time	1,249	53.74%	1,405	53.96%	1,548	51.89%	1,803	54.37%	2,000	58.07%
Enrollment by College										
Arts & Sciences	879	37.82%	1,052	40.40%	1,299	43.55%				
Humanities & Social Sciences							1,061	32.00%	1,160	33.68%
Science & Mathematics							428	12.91%	415	12.05%
Business	610	26.25%	628	24.12%	765	25.65%	890	26.84%		
Accounting, Computing, & Finance									476	13.82%
Management & Marketing									478	13.88%
Education & Human Development										
Curriculum & Kinesiology	832	35.80%	920	35.33%	909	30.47%	929	28.02%		
Leadership & Counseling										
Counseling, Health, & Kinesiology									173	5.02%
Educator & Leadership Preparation									732	21.25%
Unknown	3	0.13%	4	0.15%	10	0.34%	8	0.24%	10	0.29%
Gender										
Male	776	33.39%	837	32.14%	961	32.22%	1,155	34.83%	1,262	36.64%
Female	1,548	66.61%	1,767	67.86%	2,022	67.78%	2,161	65.17%	2,182	63.36%
Race										
American Indian or Alaskan Native	24	1.03%	34	1.31%	54	1.81%	72	2.17%	88	2.56%
Asian	4	0.17%	12	0.46%	22	0.74%	40	1.21%	44	1.28%
Black or African-American	153	6.58%	163	6.26%	188	6.30%	203	6.12%	215	6.24%
International	5	0.22%	4	0.15%	15	0.50%	21	0.63%	30	0.87%
Multiracial	22	0.95%	42	1.61%	75	2.51%	90	2.71%	127	3.69%
Native Hawaiian or Other Pacific Islander	1	0.04%	3	0.12%	3	0.10%	6	0.18%	5	0.15%
Unknown or Not Reported	1,316	56.63%	946	36.33%	802	26.89%	771	23.25%	740	21.49%
White	799	34.38%	1,400	53.76%	1,824	61.15%	2,113	63.72%	2,195	63.73%
Ethnicity										
Hispanic or Latino	1,538	66.18%	1,716	65.90%	2,082	69.80%	2,282	68.82%	2,342	68.00%
Not Hispanic or Latino	674	29.00%	739	28.38%	833	27.92%	969	29.22%	1,050	30.49%
Unreported	112	4.82%	149	5.72%	68	2.28%	65	1.96%	52	1.51%
Total Enrollment	2,324		2,604		2,983		3,316		3,444	

Detailed Composition of Graduate Student Body Fall 2010 - 2014

	2010		2011		2012		2013		2014	
	#	%	#	%	#	%	#	%	#	%
Attendance Status										
Full-Time	253	31.78%	267	28.11%	319	28.16%	339	28.34%	276	25.63%
Part-Time	543	68.22%	683	71.89%	814	71.84%	857	71.66%	801	74.37%
Enrollment by College										
Arts & Sciences	10	1.26%	12	1.26%	17	1.50%				
Humanities & Social Sciences							16	1.34%	20	1.86%
Science & Mathematics										
Business	257	32.29%	350	36.84%	433	38.22%	420	35.12%		
Accounting, Computing, & Finance									57	5.29%
Management & Marketing									362	33.61%
Education & Human Development										
Curriculum & Kinesiology	188	23.62%	200	21.05%	215	18.98%	230	19.23%		
Leadership & Counseling	328	41.21%	376	39.58%	459	40.51%	514	42.98%		
Counseling, Health, & Kinesiology									309	28.69%
Educator & Leadership Preparation									315	29.25%
Unknown	13	1.63%	12	1.26%	9	0.79%	16	1.34%	14	1.30%
Gender										
Male	243	30.53%	302	31.79%	381	33.63%	387	32.36%	352	32.68%
Female	553	69.47%	648	68.21%	752	66.37%	809	67.64%	725	67.32%
Race										
American Indian or Alaskan Native	1	0.13%	8	0.84%	15	1.32%	18	1.51%	20	1.86%
Asian	5	0.63%	12	1.26%	26	2.29%	29	2.42%	21	1.95%
Black or African-American	42	5.28%	62	6.53%	82	7.24%	80	6.69%	79	7.34%
International	2	0.25%	4	0.42%	4	0.35%	9	0.75%	12	1.11%
Multiracial	8	1.01%	21	2.21%	27	2.38%	30	2.51%	34	3.16%
Native Hawaiian or Other Pacific Islander	0	0.00%	1	0.11%	1	0.09%	1	0.08%	0	0.00%
Unknown or Not Reported	413	51.88%	287	30.21%	219	19.33%	192	16.05%	155	14.39%
White	325	40.83%	555	58.42%	759	66.99%	837	69.98%	756	70.19%
Ethnicity										
Hispanic or Latino	488	61.31%	584	61.47%	715	63.11%	770	64.38%	684	63.51%
Not Hispanic or Latino	270	33.92%	311	32.74%	400	35.30%	409	34.20%	375	34.82%
Unreported	38	4.77%	55	5.79%	18	1.59%	17	1.42%	18	1.67%
Total Enrollment	796		950		1,133		1,196		1,077	

Enrollment by Major Fall 2009 - 2014⁷

	2009	2010	2011	2012	2013	2014
Arts & Sciences						
Humanities & Social Sciences						
Applied Arts & Sciences						
Undergraduate	170	183	228	349	423	468
Post-baccalaureate		1		3	3	2
Total	170	184	228	352	426	470
Communication						
Undergraduate	22	37	39	51	79	86
Post-baccalaureate				1		
Total	22	37	39	52	79	86
Criminology						
Undergraduate	102	155	186	207	253	267
Post-baccalaureate		1	1	5	1	3
Total	102	156	187	212	254	270
English						
Undergraduate	42	55	72	90	84	100
Post-baccalaureate		1		1	1	2
Graduate	3	10	12	17	16	20
Total	45	66	84	108	101	122
History						
Undergraduate	56	74	68	74	100	102
Post-baccalaureate	1	2		1	1	2
Total	58	76	68	75	101	104
Political Science						
Undergraduate	6	8	16	17	23	27
Post-baccalaureate					1	
Total	6	8	16	17	24	27
Sociology						
Undergraduate	51	73	74	84	92	100
Post-baccalaureate			1	1		1
Total	51	73	75	85	92	101

7 Source: CBM001

**The Bachelor of Applied Arts
& Sciences is the second largest
undergraduate program.
Over half of BAAS students pursue
concentrations in Business.**

Enrollment by Major Fall 2009 - 2014 (con't.)

	2009	2010	2011	2012	2013	2014
Science & Mathematics						
Biology						
Undergraduate	40	91	119	135	147	151
Post-baccalaureate			1	5	3	1
Total	40	91	120	140	150	152
Mathematics						
Undergraduate	11	30	41	48	51	39
Post-baccalaureate			3	3	2	3
Total	11	30	44	51	53	42
Psychology						
Undergraduate	128	164	199	223	224	219
Post-baccalaureate	1	4	4	1	1	2
Total	129	168	203	224	225	221
Business						
Accounting, Computing, & Finance						
Accounting						
Undergraduate	108	123	136	178	212	245
Post-baccalaureate	11	8	13	21	24	22
Graduate			29	49	47	57
Total	119	131	178	248	283	324
Computer Information Systems						
Undergraduate	70	74	94	94	92	91
Post-baccalaureate	1		4	4	4	5
Total	71	74	98	98	96	96
Computer Science						
Undergraduate				5	22	32
Total				5	22	32
Finance						
Undergraduate	28	33	58	56	59	81
Post-baccalaureate				1		
Total	28	33	58	57	59	81

Enrollment by Major Fall 2009 - 2014 (con't.)

	2009	2010	2011	2012	2013	2014
Management & Marketing						
Business Administration						
Graduate	153	257	321	384	373	362
Total	153	257	321	384	373	362
General Business Administration						
Undergraduate	39	93	103	137	176	165
Post-baccalaureate		1	2	1	2	5
Total	39	94	105	138	178	170
International Business Management						
Undergraduate	9	31	31	31	25	31
Post-baccalaureate					1	1
Total	9	31	31	31	26	32
Management						
Undergraduate	172	202	152	184	203	209
Post-baccalaureate					3	3
Total	172	202	152	184	206	212
Marketing						
Undergraduate	34	44	35	52	66	64
Post-baccalaureate		1		1	1	
Total	34	45	35	53	67	64
Education & Human Development						
Counseling, Health, & Kinesiology						
Counseling & Guidance						
Graduate	167	223	265	333	366	291
Total	167	223	265	333	366	291
Kinesiology						
Undergraduate	109	134	108	115	154	172
Post-baccalaureate			1	1	1	1
Graduate	6	11	27	22	18	18
Total	115	145	136	138	173	191

**The Master of Business
Administration
is the largest graduate program at
A&M-SA.**

Enrollment by Major Fall 2009 - 2014 (con't.)

	2009	2010	2011	2012	2013	2014
Educator & Leadership Preparation						
Bilingual Education						
Graduate	46	33	36	31	27	41
Total	46	33	36	31	27	41
Early Childhood						
Graduate	44	46	43	48	58	47
Total	44	46	43	48	58	47
Educational Administration						
Graduate	72	105	111	126	148	110
Total	72	105	111	126	148	110
Grades 8-12 Certification						
Graduate	22	23	20	21	12	7
Total	22	23	20	21	12	7
Interdisciplinary Studies						
Undergraduate	543	696	807	792	772	729
Post-baccalaureate	2	2	4	1	2	3
Total	545	698	811	793	774	732
Reading Specialization						
Graduate	21	18	24	32	35	29
Total	21	18	24	32	35	29
Special Education						
Graduate	51	57	50	61	80	81
Total	51	57	50	61	80	81
Undeclared/Unknown						
Undergraduate		1	3	9	7	8
Post-baccalaureate	1	2	1	1	1	2
Graduate		13	12	9	16	14
Total	1	16	16	19	24	24
Grand total	2,343	3,120	3,554	4,116	4,512	4,521

**The Bachelor of Science
 in Interdisciplinary Studies
 is the largest undergraduate program
 at A&M-SA.
 Most graduates of this program will
 seek teacher certification.**

Enrollment by Texas Residential County Fall 2010 - 2014⁸

County	2010		2011		2012		2013		2014	
	#	%	#	%	#	%	#	%	#	%
Bexar	2,692	86.3%	3,071	86.4%	3,603	87.5%	3,977	88.1%	4,006	88.6%
Atascosa	68	2.2%	60	1.7%	63	1.5%	61	1.4%	73	1.6%
Wilson	80	2.6%	97	2.7%	101	2.5%	74	1.6%	66	1.5%
Guadalupe	55	1.8%	43	1.2%	48	1.2%	60	1.3%	54	1.2%
Medina	70	2.2%	68	1.9%	62	1.5%	63	1.4%	39	0.9%
Comal	18	0.6%	25	0.7%	28	0.7%	34	0.8%	31	0.7%
Webb	5	0.2%	10	0.3%	13	0.3%	13	0.3%	18	0.4%
Kendall	10	0.3%	11	0.3%	6	0.1%	5	0.1%	8	0.2%
Frio	19	0.6%	17	0.5%	17	0.4%	11	0.2%	7	0.2%
Other Counties	87	2.8%	115	3.2%	136	3.3%	172	3.8%	169	3.7%
Total Texas	3,104	99.5%	3,517	99.0%	4,077	99.1%	4,470	99.1%	4,471	98.9%
Other States	3	0.1%	9	0.3%	13	0.3%	14	0.3%	17	0.4%
Other Countries	13	0.4%	27	0.8%	26	0.6%	28	0.6%	33	0.7%
Total	3,120		3,553		4,116		4,512		4,521	

⁸ Source: CBM001

**Nearly 90% of
A&M-SA's students
come from urban areas.**

Enrollment by Age Fall 2010 - 2014⁹

	2010		2011		2012		2013		2014	
	Count	Percent	Count	Percent	Count	Percent	Count	Percent	#	%
<21	22	0.7%	32	0.9%	47	1.1%	73	1.6%	65	1.44%
21-25	869	27.9%	992	27.9%	1,128	27.4%	1,304	28.9%	1,344	29.73%
26-30	795	25.5%	903	25.4%	1,024	24.9%	1,121	24.8%	1,177	26.03%
31-35	487	15.6%	573	16.1%	652	15.8%	712	15.8%	690	15.26%
36-40	371	11.9%	405	11.4%	470	11.4%	474	10.5%	485	10.73%
41-45	258	8.3%	281	7.9%	328	8.0%	327	7.2%	309	6.83%
46-50	158	5.1%	184	5.2%	234	5.7%	250	5.5%	218	4.82%
>50	160	5.1%	184	5.2%	233	5.7%	251	5.6%	233	5.15%
Total	3,120		3,554		4,116		4,512		4,521	
Average	32.2		32.1		32.4		32.0		31.6	

Enrollment by Age and Level, Fall 2014

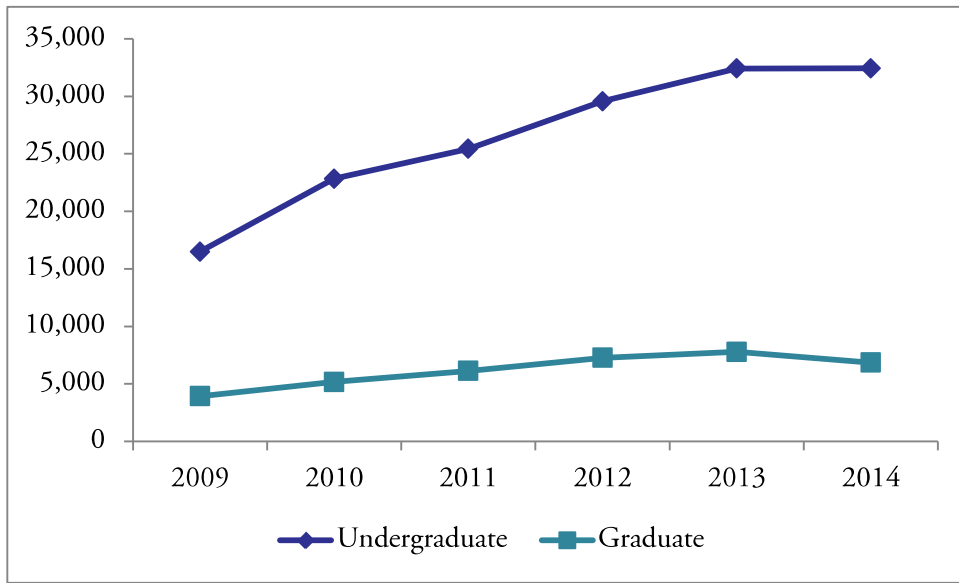
	Undergraduate		Post-baccalaureate		Graduate		Total	
	Count	Percent	Count	Percent	Count	Percent	Count	Percent
<21	65	1.92%		0.00%		0.00%	65	1.44%
21-25	1,202	35.50%	4	6.90%	138	12.81%	1,344	29.73%
26-30	852	25.16%	17	29.31%	308	28.60%	1,177	26.03%
31-35	467	13.79%	9	15.52%	214	19.87%	690	15.26%
36-40	305	9.01%	8	13.79%	172	15.97%	485	10.73%
41-45	195	5.76%	7	12.07%	107	9.94%	309	6.83%
46-50	140	4.13%	9	15.52%	69	6.41%	218	4.82%
>50	160	4.73%	4	6.90%	69	6.41%	233	5.15%
Total	3,386		58		1,077		4,521	
Average	30.6		36.7		34.6		31.6	

9 Source: CBM001

With an average age of 26 and a median age of 25, the Bachelor of Business Administration in International Business has the youngest students, closely followed by undergraduate programs in English, Kinesiology, and Biology. The Department of Educator & Leadership Preparation houses the programs with the oldest students--graduate teacher certification and the Master of Education in Bilingual Education.

CREDIT HOURS

Semester Credit Hours, Fall 2009 - 2014¹⁰



10 Source: CBM004

Semester Credit Hours by College & Level Fall 2009 - 2014¹¹

	2009	2010	2011	2012	2013	2014
Arts & Sciences						
Undergraduate	5,441	8,003	9,899	11,025		
Graduate	21	48	69	105		
Total	5,462	8,051	9,968	11,130		
Humanities & Social Sciences						
Undergraduate					7,854	7,513
Graduate					84	123
Total					7,938	7,636
Science & Mathematics						
Undergraduate					3,695	3,399
Business						
Undergraduate	5,238	6,762	6,813	8,922	10,752	
Graduate	1,060.5	1,531.5	2,164.5	2,697	2,577	
Total	6,298.5	8,293.5	8,977.5	11,619	13,329	
Accounting, Computing, & Finance						
Undergraduate						5,058
Graduate						1,375.5
Total						6,433.5
Management & Marketing						
Undergraduate						6,822
Graduate						1,171.5
Total						7,993.5
Education & Human Development						
Curriculum & Kinesiology						
Undergraduate	5,808	8,067	8,729	9,612	10,122	
Graduate	1,383	1,260	1,278	1,383	1,614	
Total	7,191	9,327	10,007	10,995	11,736	
Leadership & Counseling						
Graduate	1,458	2,328	2,616	3,078	3,501	
Counseling, Health, & Kinesiology						
Undergraduate						1,098
Graduate						2,127
Total						3,225
Educator & Leadership Preparation						
Undergraduate						8,535
Graduate						2,049
Total						10,584
Grand Total						
Undergraduate	16,487	22,832	25,441	29,559	32,423	32,425
Graduate	3,922.5	5,167.5	6,127.5	7,263	7,776	6,846
Total	20,409.5	27,999.5	31,568.5	36,822	40,199	39,271

11 Based on course discipline.

Semester Credit Hours by College, Department, Instruction Area & Level, Fall 2014¹²

	UGRD	GRAD	Total
Arts & Sciences			
Humanities & Social Sciences			
Communication	415		415
Communications - Journalism	114		114
Criminology	2,883		2,883
English	975	123	1,098
Geography	153		153
History	1,068		1,068
Military Science	30		30
Political Science	363		363
Sociology	1,446		1,446
Women's Studies	66		66
Total	7,513	123	7,636
Science & Mathematics			
Biology	729		729
Chemistry	175		175
Mathematics	367		367
Psychology	2,128		2,128
Total	3,399		3,399
Total	10,912	123	11,035
Business			
Accounting, Computing, & Finance			
Accounting	1,650	510	2,160
Computer Information Systems	2,232	309	2,541
Computer Science	183		183
Economics	90	268.5	358.5
Finance	903	288	1,191
Total	5,058	1,375.5	6,433.5
Management & Marketing			
Business Administration	1,254	7.5	1,261.5
Business Communication	729		729
Business Law	633		633
Management	3,180	978	4,158
Marketing	1,026	186	1,212
Total	6,822	1,171.5	7,993.5
Total	11,880	2,547	14,427

12 Source: CBM004

Semester Credit Hours by College, Department, Instruction Area & Level, Fall 2014 (con't.)

	UGRD	GRAD	Total
Education & Human Development			
Counseling, Health, & Kinesiology			
Counseling and Guidance		2,040	2,040
Health	183	9	192
Kinesiology	915	78	993
Total	1,098	2,127	3,225
Educator & Leadership Preparation			
Bilingual Education	1,047	111	1,158
Early Childhood	822	186	1,008
Educational Administration	3,576	414	3,990
Education	1,173	18	1,191
Education Field Experience		654	654
English as a Second Language		105	105
Reading	828	189	1,017
Special Education	1,089	372	1,461
Total	8,535	2,049	10,584
Total	9,633	4,176	13,809
Grand Total	32,425	6,846	39,271

Semester Credit Hours by College, Department, Major, & Level, Fall 2014¹³

	UGRD	PB	GRAD	Total
Arts & Sciences				
Humanities & Social Sciences				
Applied Arts & Sciences	3,971	12		3,983
Communication	832			832
Criminology	2,562	16		2,578
English	931	25	129	1,085
History	973	16		989
Political Science	216			216
Sociology	839	6		845
Total	10,324	75	129	10,528
Science & Mathematics				
Biology	1,365	3		1,368
Mathematics	367	29		396
Psychology	1,898	21		1,919
Total	3,630	53		3,683
Total	13,954	128	129	14,211
Business				
Accounting, Computing, & Finance				
Accounting	2,397	144	387	2,928
Computer Information Systems	831	36		867
Computer Science	301			301
Finance	858			858
Total	4,387	180	387	4,954
Management & Marketing				
Business Administration			2,176.5	2,176.5
General Business Administration	1,584	30		1,614
International Business Administration	294	12		306
Management	2,058	27		2,085
Marketing	651			651
Total	4,587	69	2,176.5	6,832.5
Total	8,974	249	2,563.5	11,786.5

13 Source: CBM001

	UGRD	PB	GRAD	Total
Education & Human Development				
Counseling, Health, & Kinesiology				
Counseling and Guidance			1,935	1,935
Kinesiology	1,478	3	111	1,592
Total	1,478	3	2,046	3,527
Educator & Leadership Preparation				
Bilingual Education			297	297
Early Childhood			312	312
Educational Administration			636	636
Grades 8-12 Certification			51	51
Interdisciplinary Studies	7,568	31		7,599
Reading Specialization			192	192
Special Education			573	573
Total	7,568	31	2,061	9,660
Total	9,046	34	4,107	13,187
Unknown	28	9	49.5	86.5
Grand Total	32,002	420	6,849	39,271

Student/Faculty Ratio, Fall 2011 - 2014

	2011	2012	2013	2014
FTE (12/9)				
Undergraduate	2,120.1	2,463.3	2,701.9	2,702.1
Graduate	680.8	807.0	864.0	760.7
Total	2,800.9	3,270.3	3,565.9	3,462.8
S/F Ratio	20.9	22.6	23.1	22.9
FTE (15/12)				
Undergraduate	1,696.1	1,970.6	2,161.5	2,161.7
Graduate	510.6	605.3	648.0	570.5
Total	2,206.7	2,575.9	2,809.5	2,736.2
S/F Ratio	16.5	17.8	18.2	18.1
Faculty FTE	133.75	144.5	154.25	151.375

Class & Semester Credit Hour Load Fall 2010 - 2014¹⁴

	2010	2011	2012	2013	2014
Class Sections Offered	459	540	595	632	648
Instruction Type					
Organized*	455	534	572	602	603
Individual Instruction	4	6	23	30	45
Instruction Mode					
Face-to-Face	443	360	370	407	448
Online	16	52	75	74	58
Two-Way Interactive Video					
Multiple or Other Electronic Media			1		
Hybrid		128	149	151	161
Average Size					
Organized Class*	21.2	20.2	21.8	22.5	21.6
Undergraduate	22.1	21.0	22.4	23.7	23.3
Graduate	18.1	17.4	19.8	18.5	16.1
Average SCH Load/Student					
Undergraduate	9.0	8.9	8.9	8.9	8.7
Graduate	9.8	9.8	9.9	9.8	9.4
Average Class Load/Student					
Undergraduate	3.1	3.0	3.0	3.1	3.0
Graduate	3.3	3.3	3.3	3.3	3.2
Graduate	2.3	2.2	2.2	2.3	2.3

*Organized classes include those classified as lecture, laboratory, or seminar.

14 Source: CBM004 and SA_Catalog_Schedule. Face-to-face sections include HyFlex.

Annual SCH by Level, 2009 - 2014¹⁵

	2009-10	2010-11	2011-12	2012-13	2013-14
Fall					
Undergraduate	16,508.0	22,832.0	25,441.0	29,559.0	32,423.0
Graduate	3,943.5	5,257.5	6,127.5	7,263.0	7,776.0
Total	20,451.5	28,089.5	31,568.5	36,822.0	40,199.0
Spring					
Undergraduate	18,450.0	22,374.0	25,882.0	27,635.0	31,112.0
Graduate	4,669.5	5,766.0	6,438.0	7,176.0	7,152.0
Total	23,119.5	28,140.0	32,320.0	34,811.0	38,264.0
Summer					
Undergraduate	6,661.0	7,062.0	6,819.0	8,142.0	8,643.0
Graduate	2,740.5	2,967.0	3,414.0	3,835.5	3,231.0
Total	9,401.5	10,029.0	10,233.0	11,977.5	11,874.0
Total					
Undergraduate	41,619.0	52,268.0	58,142.0	63,336.0	72,178.0
Graduate	11,353.5	13,990.5	15,979.5	18,274.5	18,159.0
Total	52,972.5	66,258.5	74,121.5	83,610.5	90,337.0

15 Source: CBM004 and SA_Catalog_Schedule

SCH Generated by Instruction Mode, Fall 2010 - 2014¹⁶

	2010	2011	2012	2013	2014
Face-to-Face					
Sections	443	360	370	407	430
Enrollment	9,329	6,764	7,208	8,179	7,959
SCH	27,201.5	19,762.0	21,306.0	23,751.0	23,349.0
Online					
Sections	16	52	75	74	58
Enrollment	336	1,487	1,991	1,914	1,483
SCH	888.0	4,186.5	5,571.0	5,496.0	4,167.0
Multiple or Other Electronic Media					
Sections			1		
Enrollment			3		
SCH			9.0		
Hybrid					
Sections		128	149	151	160
Enrollment		2,540	3,359	3,689	3,930
SCH		7,620.0	9,936.0	10,952.0	11,755
Total					
Sections	459	540	595	632	648
Enrollment	9,665	10,791	12,561	13,782	13,372
SCH	28,089.5	31,568.5	36,822.0	40,199.0	39,271.0

16 Source: CBM004 and SA_Catalog_Schedule

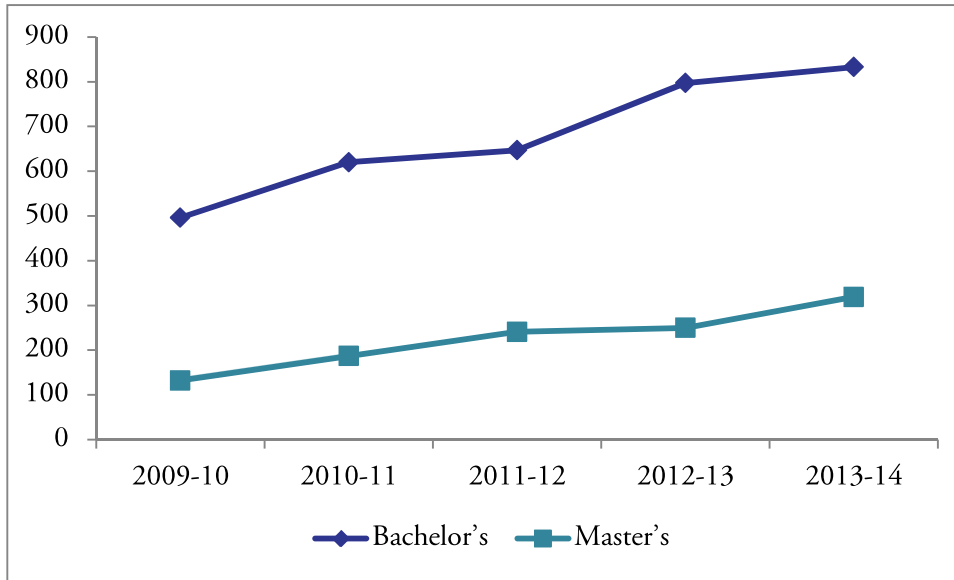
SCH Generated by College, Department, Instruction Mode, & Level, Fall 2014¹⁷

	UGRD		GRAD		Total	
	Sections	SCH	Sections	SCH	Sections	SCH
Arts & Sciences						
Humanities & Social Sciences						
Face-to-Face	68	3,595	5.5	123	73.5	3,718
Online	29	2,481			29	2,481
Hybrid	23	1,437			23	1,437
Science & Mathematics						
Face-to-Face	57.5	2,834			57.5	2,834
Online	3	228			3	228
Hybrid	4	337			4	337
Business						
Accounting, Computing, & Finance						
Face-to-Face	36.5	3,396	3.5	222	40	3,618
Online			5	194	5	194
Hybrid	14.83	1,662	12.67	960	27.5	2,622
Management & Marketing						
Face-to-Face	14	1,746			14	1,746
Online	5	573	3	89	8	662
Hybrid	45.5	4,503	19	1,083	64.5	5,586
Education & Human Development						
Counseling, Health, & Kinesiology						
Face-to-Face	12	978	50	1,677	62	2,655
Online	2	120	2	42	4	162
Hybrid			9	408	9	408
Educator & Leadership Preparation						
Face-to-Face	154	7,893	29	885	183	8,778
Online	4	273	5	168	9	441
Hybrid	8	369	24	996	32	1,365
Total						
Face-to-Face		20,442		2,907	430	23,349
Online		3,675		492	58	4,167
Hybrid		8,308		3,447	160	11,755

17 Source: CBM004 and SA_Catalog_Schedule

DEGREES AWARDED

Annual Degrees Conferred by Level¹⁸



As of August 2014, 5,843 graduates have earned 6,179 degrees at A&M-San Antonio, with some graduates earning multiple degrees.

Degrees Conferred by Level & Ethnicity¹⁹

	2009-10		2010-11		2011-12		2012-13		2013-14	
	#	%	#	%	#	%	#	%	#	%
Bachelor's										
Hispanic or Latino origin	326	65.7%	406	65.5%	407	62.9%	558	70.0%	594	51.6%
Not Hispanic or Latino origin	163	32.9%	178	28.7%	198	30.6%	220	27.6%	227	19.7%
Unknown	7	1.4%	36	5.8%	42	6.5%	19	2.4%	12	1.0%
Master's										
Hispanic or Latino origin	81	61.4%	102	54.5%	145	60.2%	148	59.2%	200	17.4%
Not Hispanic or Latino origin	49	37.1%	67	35.8%	79	32.8%	96	38.4%	114	9.9%
Unknown	2	1.5%	18	9.6%	17	7.1%	6	2.4%	5	0.4%
Total										
Hispanic or Latino origin	407	64.8%	508	62.9%	552	62.2%	706	67.4%	794	68.9%
Not Hispanic or Latino origin	212	33.8%	245	30.4%	277	31.2%	316	30.2%	341	29.6%
Unknown	9	1.4%	54	6.7%	59	6.6%	25	2.4%	17	1.5%

¹⁸ Source: CBM009

¹⁹ Source: CBM009

Degrees Conferred by Level & Race²⁰

	2009-10		2010-11		2011-12		2012-13		2013-14	
	#	%	#	%	#	%	#	%	#	%
Bachelor's										
White	168	33.9%	237	38.2%	312	48.2%	446	56.0%	553	66.4%
Black or African-American	18	3.6%	34	5.5%	32	4.9%	47	5.9%	52	6.2%
Asian		0.0%	1	0.2%	4	0.6%	7	0.9%	5	0.6%
American Indian or Alaskan Native	3	0.6%	7	1.1%	12	1.9%	12	1.5%	10	1.2%
International			3	0.5%	1	0.2%	5	0.6%	2	0.2%
Native Hawaiian or Other Pacific Islander					1	0.2%	1	0.1%	1	0.1%
Two or more races	1	0.2%	5	0.8%	9	1.4%	22	2.8%	26	3.1%
Unknown	306	61.7%	333	53.7%	276	42.7%	257	32.2%	184	22.1%
Master's										
White	53	40.2%	71	38.0%	106	44.0%	152	60.8%	228	71.5%
Black or African-American	7	5.3%	11	5.9%	15	6.2%	18	7.2%	19	6.0%
Asian		0.0%		0.0%	1	0.4%	5	2.0%	9	2.8%
American Indian or Alaskan Native	2	1.5%		0.0%	2	0.8%	2	0.8%	3	0.9%
International			1	0.5%	1	0.4%	2	0.8%	2	0.6%
Native Hawaiian or Other Pacific Islander							1	0.4%	1	0.3%
Two or more races	1	0.8%	3	1.6%	7	2.9%	8	3.2%	9	2.8%
Unknown	69	52.3%	101	54.0%	109	45.2%	62	24.8%	48	15.0%
Total										
White	221	35.2%	308	38.2%	418	47.1%	598	57.1%	781	67.8%
Black or African-American	25	4.0%	45	5.6%	47	5.3%	65	6.2%	71	6.2%
Asian			1	0.1%	5	0.6%	12	1.1%	14	1.2%
American Indian or Alaskan Native	5	0.8%	7	0.9%	14	1.6%	14	1.3%	13	1.1%
International			4	0.5%	2	0.2%	7	0.7%	4	0.3%
Native Hawaiian or Other Pacific Islander					1	0.1%	2	0.2%	2	0.2%
Two or more races	2	0.3%	8	1.0%	16	1.8%	30	2.9%	35	3.0%
Unknown	375	59.7%	434	53.8%	385	43.4%	319	30.5%	232	20.1%

20 Source: CBM009

Annual Degrees Conferred by College & Level

	2009-10	2010-11	2011-12	2012-13	2013-14
Arts & Sciences					
Bachelor's	203	253	306	366	
Master's			3	3	
Total	203	253	309	369	
Humanities & Social Sciences					
Bachelor's					301
Master's					7
Total					308
Science & Mathematics					
Bachelor's					87
Business					
Bachelor's	113	144	129	159	
Master's	20	36	76	88	
Total	133	180	205	247	
Accounting, Computing, & Finance					
Bachelor's					66
Master's					17
Total					83
Management & Marketing					
Bachelor's					163
Master's					206
Total					369
College of Education & Human Development					
Curriculum & Kinesiology					
Bachelor's	180	223	212	272	
Master's	52	50	52	51	
Total	232	273	264	323	
Leadership & Counseling					
Master's	60	101	110	108	
Counseling, Health, & Kinesiology					
Bachelor's					31
Master's					105
Total					136
Educator & Leadership Preparation					
Bachelor's					244
Master's					87
Total					331
Total					
Bachelor's	496	620	647	797	833
Master's	132	187	241	250	319
Total	628	807	888	1,047	1,152

Degrees Conferred by College, Department, Major, & Level²¹

	2009-10	2010-11	2011-12	2012-13	2013-14
Arts & Sciences					
Humanities & Social Sciences					
Applied Arts & Sciences					
Bachelor's	99	106	104	123	148
Master's					
Total	99	106	104	123	148
Communications					
Bachelor's	1	7	11	11	23
Master's					
Total	1	7	11	11	23
Criminology					
Bachelor's	22	35	51	49	66
Master's					
Total	22	35	51	49	66
English					
Bachelor's	10	18	15	28	18
Master's			3	3	7
Total	10	18	18	31	25
History					
Bachelor's	23	17	15	16	22
Master's					
Total	23	17	15	16	22
Political Science					
Bachelor's	3	1	3	3	3
Master's					
Total	3	1	3	3	3
Sociology					
Bachelor's	8	19	18	28	21
Master's					
Total	8	19	18	28	21
Science & Mathematics					
Biology					
Bachelor's	1	15	27	33	29
Master's					
Total	1	15	27	33	29
Mathematics					
Bachelor's	4	1	10	7	9
Master's					
Total	4	1	10	7	9
Psychology					
Bachelor's	32	34	52	68	49
Master's					
Total	32	34	52	68	49

Degrees Conferred by College, Department, Major, & Level (con't.)

	2009-10	2010-11	2011-12	2012-13	2013-14
Business					
Accounting, Computing, & Finance					
Accounting					
Bachelor's	32	29	30	33	38
Master's		2	10	13	17
Total	32	31	40	46	55
Computer Information Systems					
Bachelor's	14	8	15	23	16
Master's					
Total	14	8	15	23	16
Computer Science					
Bachelor's					4
Master's					
Total					4
Finance					
Bachelor's	5	5	10	12	8
Master's					
Total	5	5	10	12	8
Management & Marketing					
Business Administration					
Bachelor's					
Master's	20	34	66	75	103
Total	20	34	66	75	103
General Business Administration					
Bachelor's	2	7	8	19	21
Master's					
Total	2	7	8	19	21
International Business Management					
Bachelor's		4	10	10	8
Master's					
Total		4	10	10	8
Management					
Bachelor's	52	77	49	55	59
Master's					
Total	52	77	49	55	59
Marketing					
Bachelor's	8	14	7	7	16
Master's					
Total	8	14	7	7	16

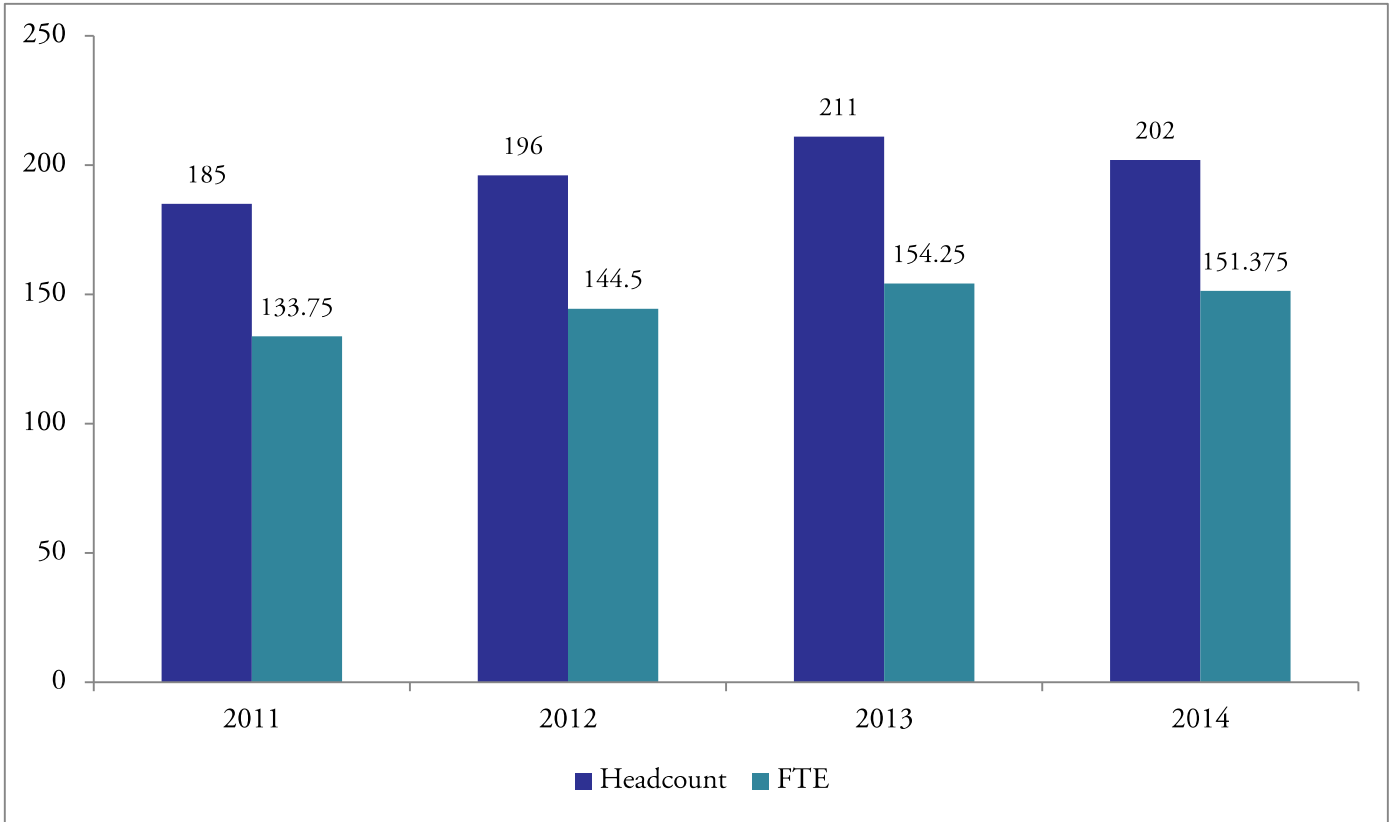
A&M-SA's first cohort of undergraduate computer science students graduated in 2013-2014.

Degrees Conferred by College, Department, Major, & Level (con't.)

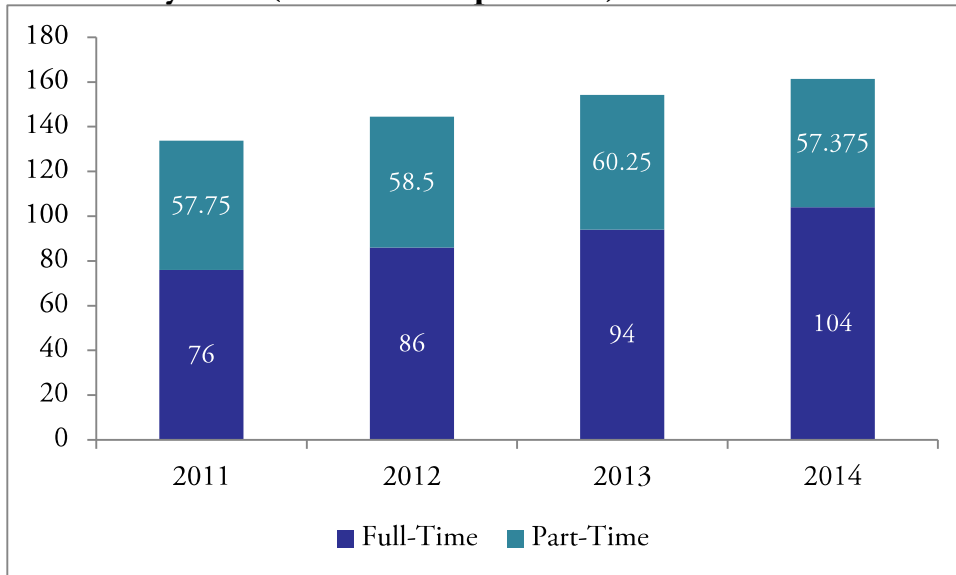
	2009-10	2010-11	2011-12	2012-13	2013-14
Education & Human Development					
Counseling, Health, & Kinesiology					
Counseling and Guidance					
Bachelor's					
Master's	47	64	74	78	100
Total	47	64	74	78	100
Kinesiology					
Bachelor's	23	38	30	32	31
Master's		2	3	5	5
Total	23	40	33	37	36
Educator & Leadership Preparation					
Bilingual Education					
Bachelor's					
Master's	14	20	11	11	10
Total	14	20	11	11	10
Early Childhood					
Bachelor's					
Master's	12	7	15	9	18
Total	12	7	15	9	18
Educational Administration					
Bachelor's					
Master's	13	37	36	30	40
Total	13	37	36	30	40
Interdisciplinary Studies					
Bachelor's	157	185	182	240	244
Master's					
Total	157	185	182	240	244
Reading Specialization					
Bachelor's					
Master's	8	5	7	12	6
Total	8	5	7	12	6
Special Education					
Bachelor's					
Master's	18	16	16	14	13
Total	18	16	16	14	13
Total					
Bachelor's	496	620	647	797	833
Master's	132	187	241	250	319
Total	628	807	888	1,047	1,152

FACULTY AND STAFF

A&M-SA Faculty Fall 2011 - 2014²²

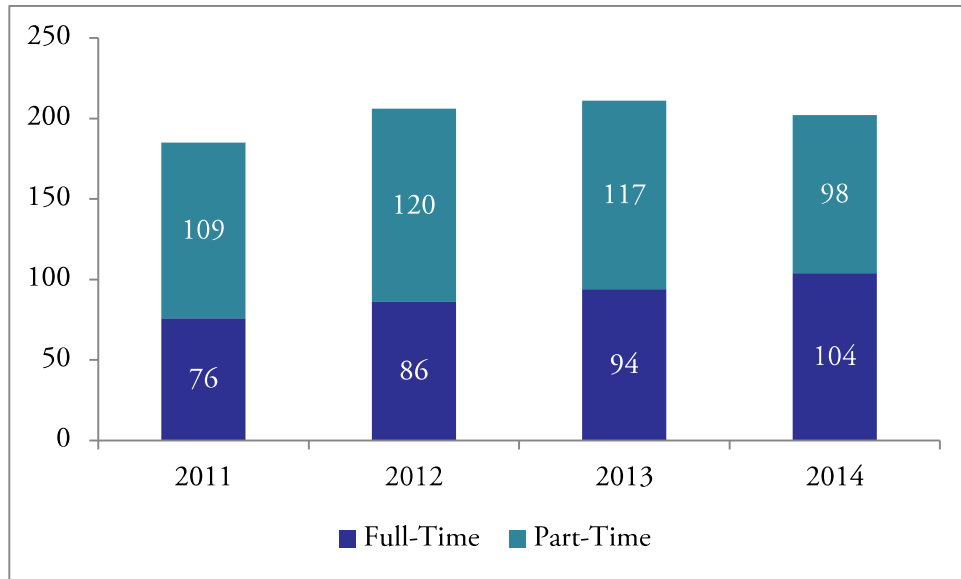


Faculty FTE (Full-Time Equivalent) Fall 2011 - 2014²²



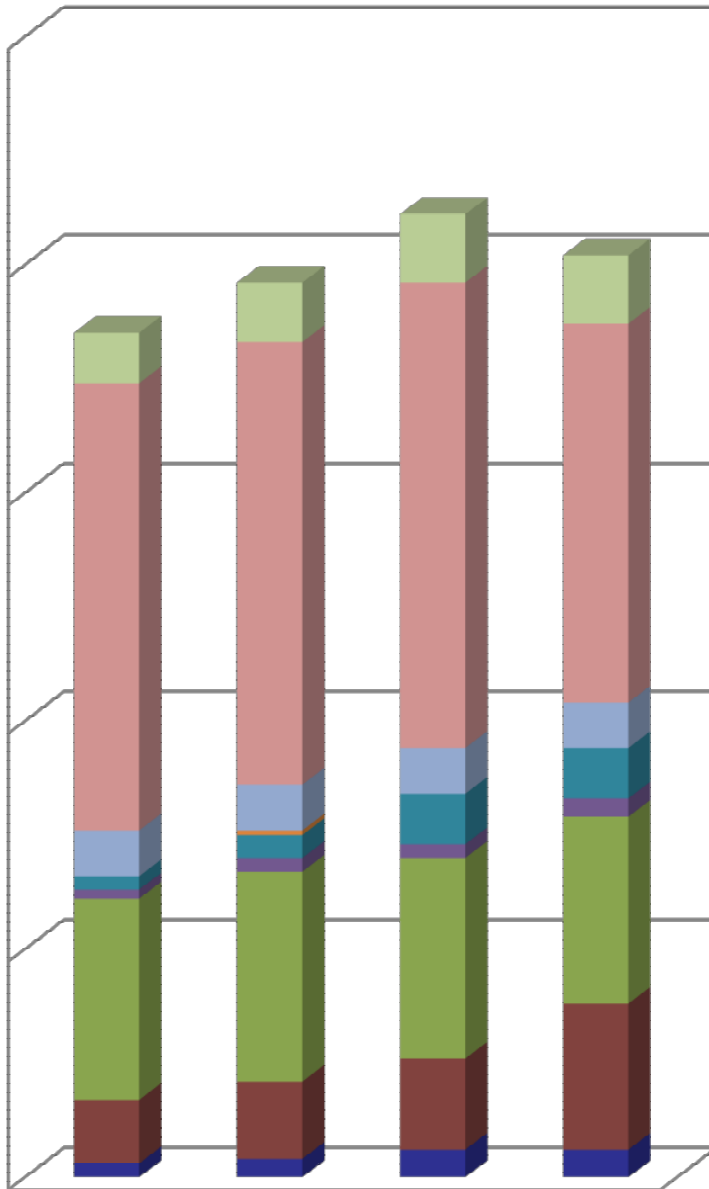
22 Source: CBM004 and Office of the Provost.

Faculty Headcount Fall 2011 - 2014²³



23 Office of the Provost

Faculty Headcount by Rank Fall 2011 - 2014²⁴



24 Source: Office of the Provost

Detailed Composition of Faculty Fall 2011 - 2014²⁵

	2011		2012		2013		2014	
	#	%	#	%	#	%	#	%
School								
Arts & Sciences	61	33.2%	71	36.2%				
Humanities & Social Sciences					44	20.9%	43	21.3%
Science & Mathematics					25	11.8%	22	10.9%
Business	45	24.5%	48	24.5%	48	22.7%		
Accounting, Computing, & Finance							22	10.9%
Management & Marketing							23	11.4%
Education & Human Development								
Curriculum & Kinesiology	57	31.0%	51	26.0%	64	30.3%		
Leadership & Counseling	21	11.4%	26	13.3%	30	14.2%		
Counseling, Health, & Kinesiology							22	10.9%
Educator & Leadership Preparation							70	34.7%
Ethnicity								
Hispanic or Latino origin	102	55.4%	56	28.6%	52	24.6%	44	21.8%
Not Hispanic or Latino origin	8	4.3%	115	58.7%	152	72.0%	150	74.3%
Not reported	74	40.2%	25	12.8%	7	3.3%	8	4.0%
Race								
White	69	37.5%	74	37.8%	130	61.6%	131	64.9%
Black or African-American	3	1.6%	3	1.5%	9	4.3%	7	3.5%
Asian	3	1.6%	5	2.6%	11	5.2%	10	5.0%
American Indian or Alaskan Native					1	0.5%		
International	3	1.6%			1	0.5%	2	1.0%
Unknown	106	57.6%	114	58.2%	7	3.3%	8	4.0%
Gender								
Female	101	54.9%	107	54.6%	113	53.6%	110	54.5%
Male	83	45.1%	89	45.4%	98	46.4%	92	45.5%
Tenure Status								
Tenured	13	7.1%	20	10.2%	26	12.3%	38	18.8%
Tenure Track	45	24.5%	48	24.5%	44	20.9%	41	20.3%
Non-Tenured	126	68.5%	128	65.3%	141	66.8%	123	60.9%
Rank								
Professor	3	1.6%	4	2.0%	6	2.8%	6	3.0%
Associate Professor	14	7.6%	17	8.7%	20	9.5%	32	15.8%
Assistant Professor	44	23.8%	46	23.5%	44	20.9%	41	20.3%
Visiting Assistant Professor	2	1.1%	3	1.5%	3	1.4%	4	2.0%
Professional Track	3	1.6%	5	2.6%	11	5.2%	11	5.4%
Visiting Scholar			1	0.5%				
Lecturer	10	5.4%	10	5.1%	10	4.7%	10	5.0%
Adjunct	98	53.0%	97	49.5%	102	48.3%	83	41.1%
University Supervisor	11	5.9%	13	6.6%	15	7.1%	15	7.4%
Total	185		196		211		202	

Detailed Composition of Full-Time Faculty Fall 2014²⁶

	#	%
College & Department		
Arts & Sciences		
Humanities & Social Sciences	19	18.3%
Science & Mathematics	11	10.6%
Business		
Accounting, Computing, & Finance	16	15.4%
Management & Marketing	15	14.4%
Education & Human Development		
Counseling, Health, & Kinesiology	12	11.5%
Educator & Leadership Preparation	31	29.8%
Ethnicity		
Hispanic or Latino origin	21	20.2%
Not Hispanic or Latino origin	83	79.8%
Not reported		
Race		
White	70	67.3%
Black or African-American	5	4.8%
Asian	7	6.7%
American Indian or Alaskan Native		
International	1	1.0%
Unknown		
Gender		
Female	56	53.8%
Male	48	46.2%
Tenure Status		
Tenured	38	36.5%
Tenure Track	41	39.4%
Non-Tenured	25	24.0%
Total	104	

26 Source: Office of the Provost and FacultyData.sql

Detailed Composition of Part-Time Faculty Fall 2014²⁷

	#	%
College & Department		
Arts & Sciences		
Humanities & Social Sciences	24	24.5%
Science & Mathematics	11	11.2%
Business		
Accounting, Computing, & Finance	6	6.1%
Management & Marketing	8	8.2%
Education & Human Development		
Counseling, Health, & Kinesiology	10	10.2%
Educator & Leadership Preparation	39	39.8%
Ethnicity		
Hispanic or Latino origin	23	23.5%
Not Hispanic or Latino origin	67	68.4%
Not reported	8	8.2%
Race		
White	61	62.2%
Black or African-American	2	2.0%
Asian	3	3.1%
American Indian or Alaskan Native		
International	1	1.0%
Unknown	8	8.2%
Gender		
Female	54	55.1%
Male	44	44.9%
Total	98	

27 Source: Office of the Provost and FacultyData.sql

Detailed Composition of Staff Fall 2011 - 2014²⁸

	2011		2012		2013		2014	
	#	%	#	%	#	%	#	%
Classification								
Clerical	20	19.2%	24	18.9%	28	16.1%	37	18.6%
Executive/Admin/Mgr	22	21.2%	24	18.9%	38	21.8%	46	23.1%
Professional Non-Faculty	35	33.7%	45	35.4%	74	42.5%	81	40.7%
Service/Maintenance	13	12.5%	15	11.8%	15	8.6%	14	7.0%
Skilled Craft	1	1.0%	3	2.4%				
Technical/Paraprof.	13	12.5%	16	12.6%	19	10.9%	21	10.6%
Race/Ethnicity								
White	35	33.7%	37	29.1%	51	29.3%	60	30.2%
Black or African-American	5	4.8%	7	5.5%	5	2.9%	8	4.0%
Hispanic	61	58.7%	77	60.6%	111	63.8%	125	62.8%
Asian	1	1.0%	2	1.6%	4	2.3%	4	2.0%
American Indian or Alaskan Native	1	1.0%	1	0.8%	1	0.6%	1	0.5%
Two or more races	1	1.0%	1	0.8%	1	0.6%		
Unknown			2	1.6%	1	0.6%	1	0.5%
Gender								
Female	65	62.5%	78	61.4%	106	60.9%	126	63.3%
Male	39	37.5%	49	38.6%	68	39.1%	73	36.7%
Total	104		127		174		199	