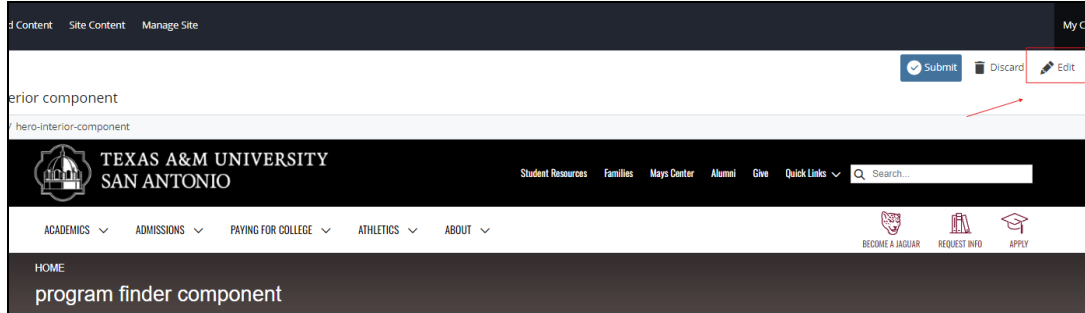


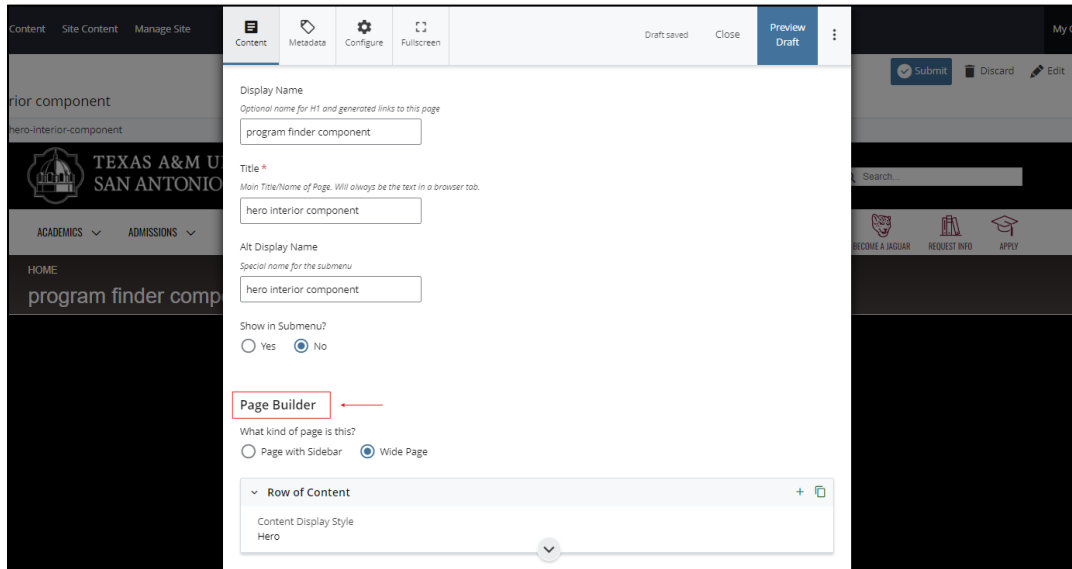
Program Finder Component

This document will explain how to use the “Program Finder Component”.

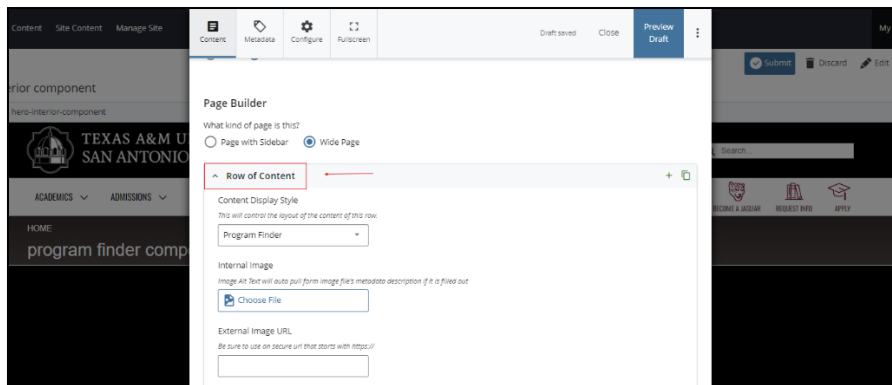
1. Click the “Edit” button at the top right of the screen. (screenshot below)



2. Navigate to “Page Builder” section, under “Show in submenu?”. (screenshot below)

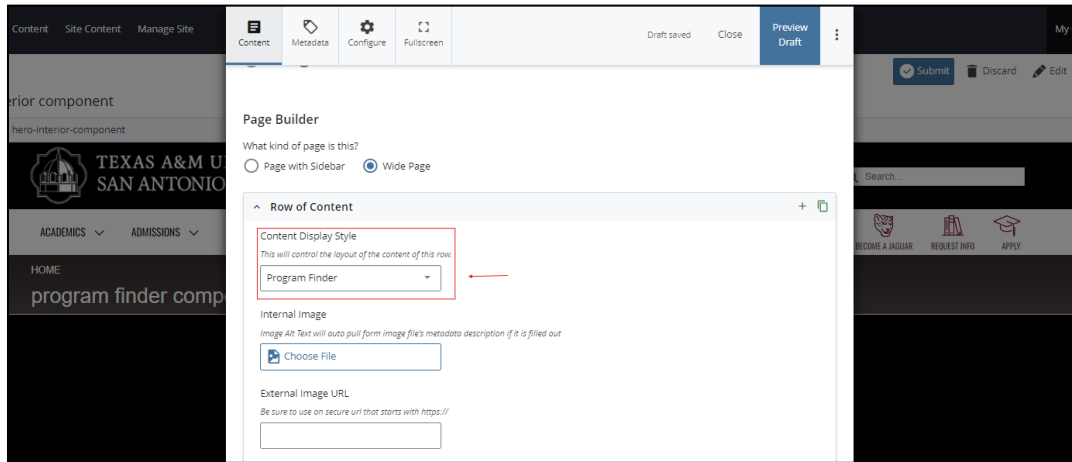


3. Open the “Row of Content” block by clicking the arrow to the left of the “Row in Content” title. (screenshot below)

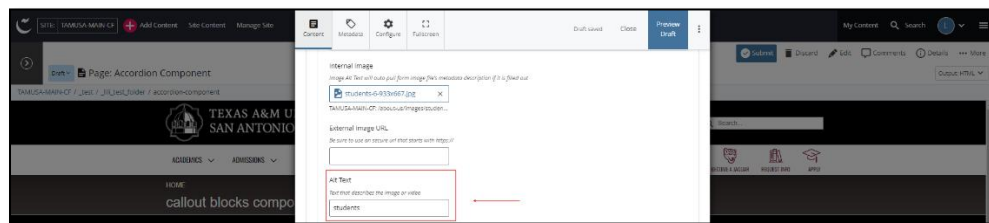
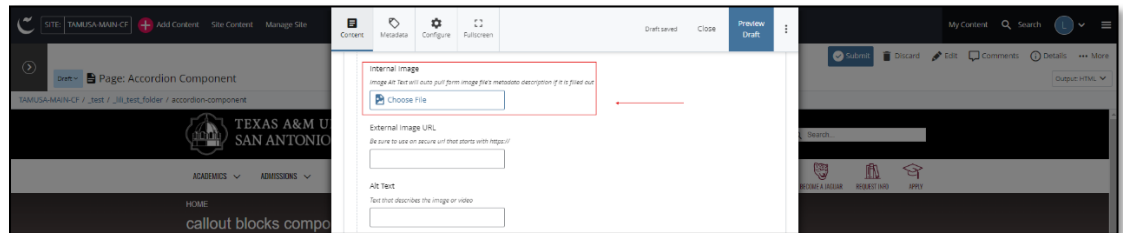


(Next Page)

4. Open the **“Content Display Style”** dropdown menu and select the **“Program Finder”** option. (screenshot below)

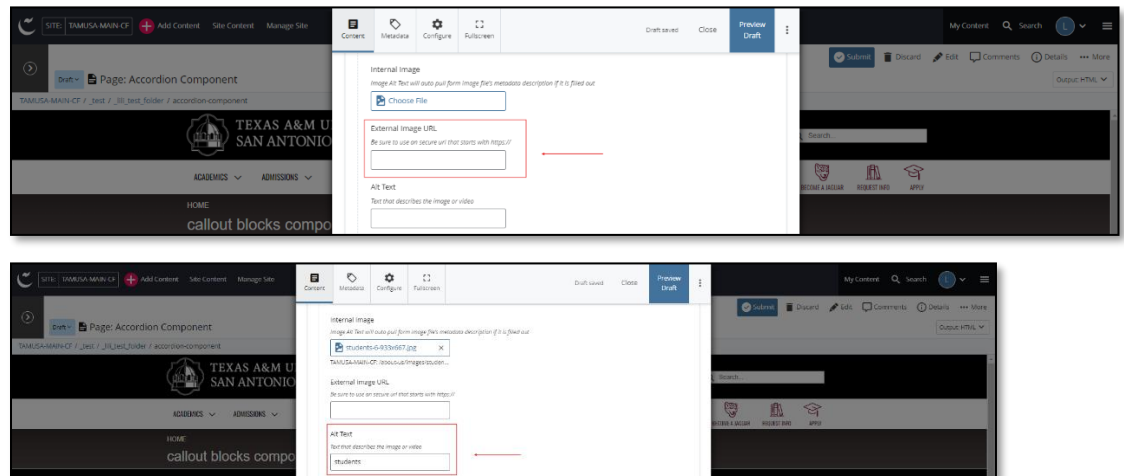


5. Scroll down to **“Internal Image”**. (If you *did not* upload your image into Cascade please move on to “6”) Click on the **“Choose File”** entry and choose the image you would like to add. Finally, ensure the internal image contains **“Alt Text”**. (screenshot below)
- Please ensure any images uploaded into Cascade are within an **“Image”** folder.
 - Adding internal images is optional.

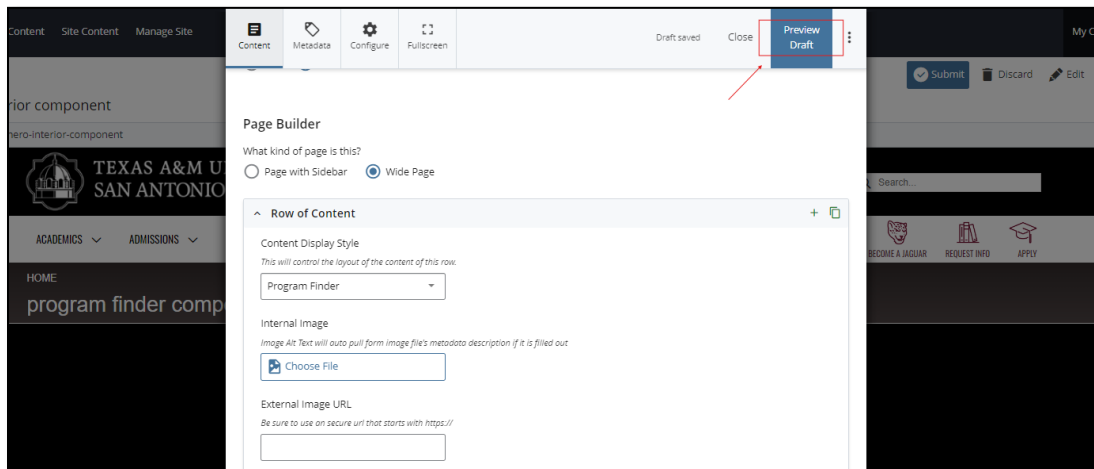


(Next Page)

6. Click on the **“External Image”** entry and enter the URL image address. Finally, ensure the external image contains **“Alt Text”**. (screenshot below)
- a. *Adding external images is optional.*

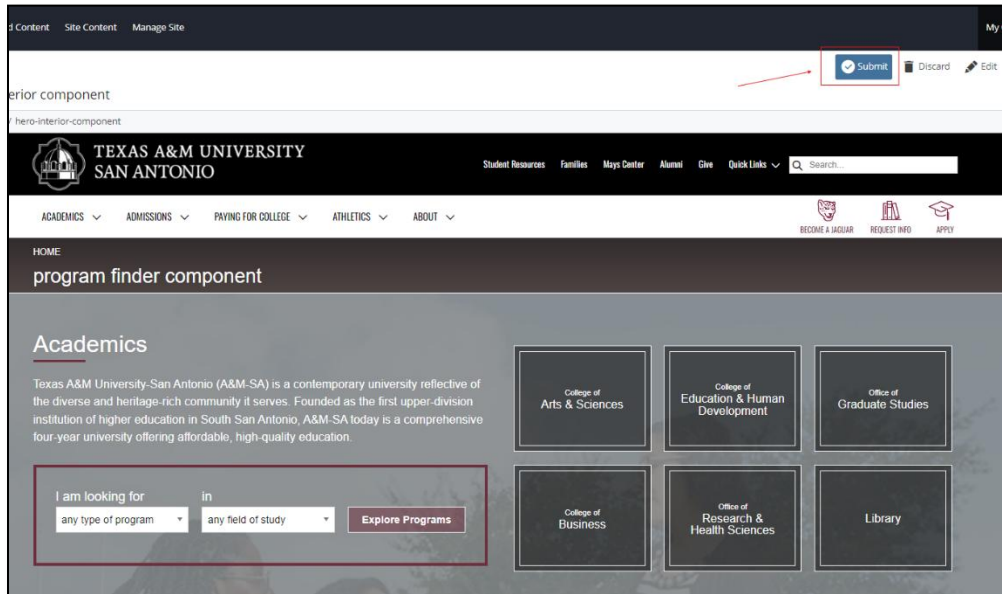


7. After making edits, click on the blue **“Preview Draft”** button at the top right corner. (screenshot below)



(Next Page)

8. Once you are satisfied, click on the blue **“Submit”** button, otherwise click on the **“Edit”** button if you would like to continue to make changes. (screenshot below)



(Next Page)

Practical Applications for Program Finder

The program finder component is an interactive feature that universities can use to help prospective students explore academic programs tailored to their interests. With customizable dropdown menus for program type and field of study, paired with a clear call-to-action button, this component simplifies the search process for users. It serves as an intuitive tool for guiding visitors toward detailed program information, encouraging engagement with the university's academic offerings and enhancing the user experience by making program exploration efficient and personalized. Below is a list of examples we can use the program finder for.

- Choosing Academic Paths
- Interdisciplinary Opportunities
- Career-Oriented Programs
- Streamlining Program Information for International Students
- Highlighting Online and Hybrid Learning Options